



PA material for R-COMPO® (Direct bonding with rubber and TPU)

Standard thickness of the film = 0.3 mm or 0.5 mm

Property	Test Methods	Unit	DAIAMID E73K2	DAIAMID E75K2
Density	ISO1183	g/cm ³	1.01	1.01
Tensile strength at yield	ISO527	MPa	36	37
Tensile elongation at yield		%	19	15
Tensile strength at break		MPa	53	57
Tensile elongation at break		%	200<	200<
E-Modulus (Tensile)	ISO527	MPa	930	1000
E-Modulus (Flexural)	ISO178	MPa	810	900
CHARPY impact strength	ISO179/1eU	kJ/m ²	NB	NB
CHARPY-Notched impact strength	ISO179/1eA	kJ/m ²	11	10
Shore D hardness	ISO868	—	72-74	74-76

Rubber for R-COMPO®

Code	Tensile Test			Tear Test		Akron Abrasion at 1000 rotation [mm ³]	Density [g/cm ³]	Compression Set [%]	Hardness Hs (A)
	Max. Strength [MPa]	Elong. at break [%]	Modulus [MPa]	Flow direction	Transversal direction				
				Max. Strength [N/mm]	Max. Strength [N/mm]				
R0064	18.30	489	2.10	59	61	2.976	1.12	11	62
R0080	15.24	388	3.00	44	46	9.275	1.15	10	65
R0080B	16.05	342	4.06	46	47	6.377	1.15	11	68
R1028B	12.23	244	8.25	40	44	5.509	1.20	12	79

Polyplastics-Evonik Corporation
Head Office:
Shinjuku Monolith 13F
2-3-1, Nishi-shinjuku, Shinjuku-ku Tokyo
163-0913
Japan
Tel:+81-3-5324-6332

Osaka :
31th Floor, Grand Front Osaka
Tower B, 3-1 Ofuka-cho, Kita-
ku, Osaka-shi, Osaka 530-0011,
Japan
Tel: +81-6-7639-6930

Nagoya:
JP tower Nagoya 25F
1-1-1 Meieki, Nakamura-ku,
Nagoya, 450-6325, Japan
Tel:+81-52-307-8578



Aboshi Plant
1239 Shinzaike, Aboshi-ku, Himeji,
Hyogo 671-1281 Japan
Tel: +81-79-274-3872

Technical Center
1239 Shinzaike, Aboshi-ku, Himeji,
Hyogo 671-1281 Japan
Tel: +81-79-273-7034

www.evonik.com

www.pp-evonik.com

Polyplastics-Evonik Corporation was founded in 1970 as a joint venture between Evonik Industries AG, Germany, and Daicel Corporation, Japan, and has been developing and selling high-quality, high-performance polymers such as DAIAMID, VESTAMID, VESTOSINT (nylon-12) and TROGAMID (transparent nylon), alicyclic C8 and C12 dry compounds, PLEXIGLAS(PMMA), VESTAKEEP (ultra-high heat resistance resin, PEEK) By adopting new concepts and ideas, we are continually striving to improve quality and strengthen our service system so that we can deliver higher-value-added products to our customers.

R-COMPO®

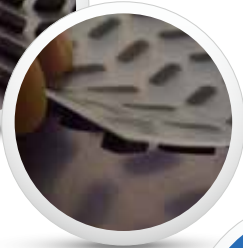
Plastic + Rubber Composite Sheet



Enjoy Plastics

R-COMPO®

= Plastic + Rubber Composite Sheet

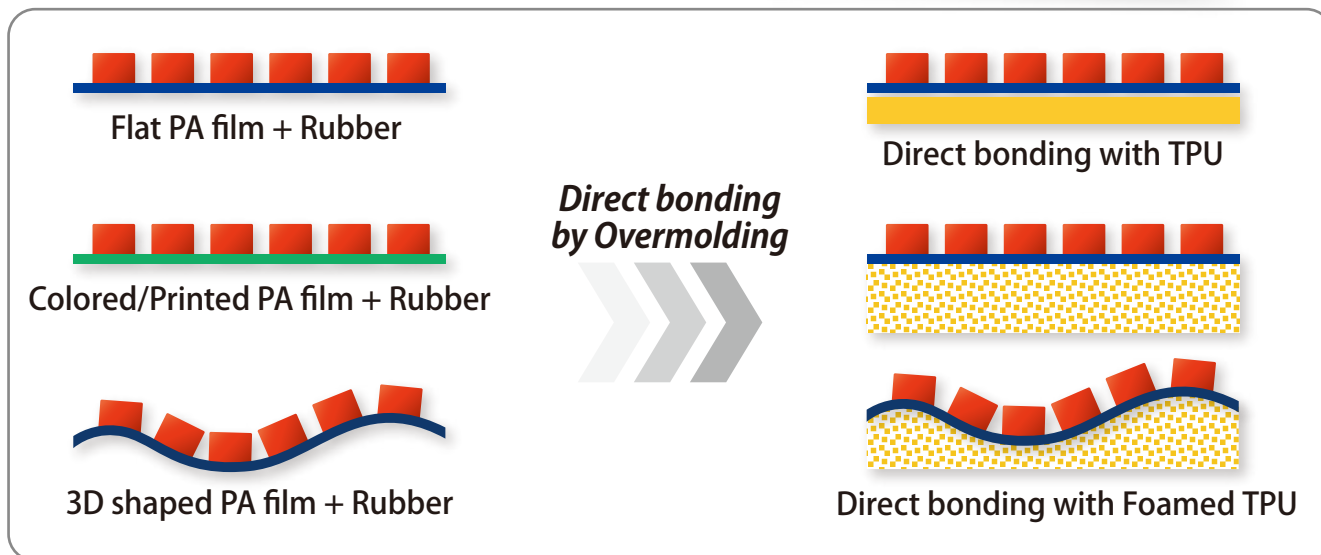


Direct bonding without adhesives
 → No Solvent emission! = No VOC*, environmentally friendly

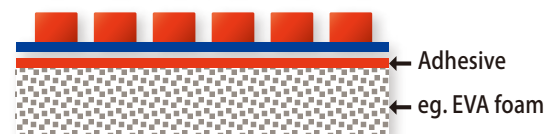
Rubber's grip x PA's spring

High freedom of design

R-COMPO® : Variation of Design

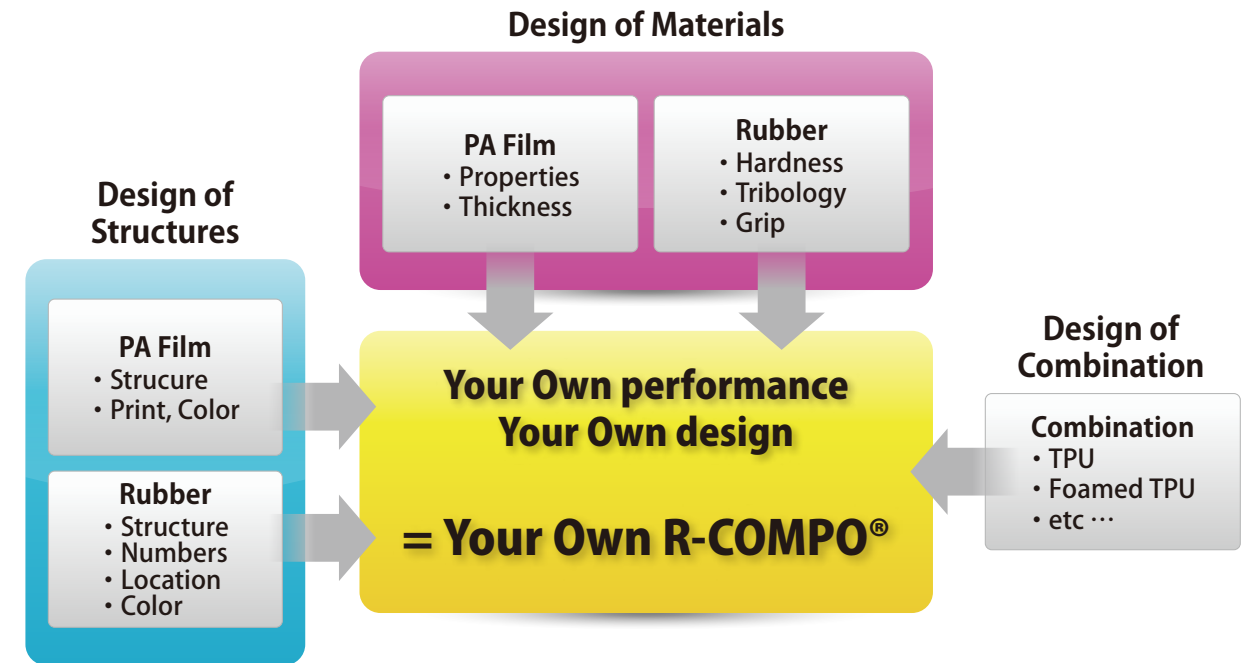


With Adhesives ...



* VOC = Volatile Organic Compounds

Customization



Typical Grip performance



R-COMPO®



Fabric + TPU Stud



Rubber Only

UNIT = [N]

Place	Dry Surface			Wet Surface		
	R-COMPO	Fab. + TPU	Rub. Only	R-COMPO	Fab. + TPU	Rub. Only
Art turf	11.7	10.5	9.6	8.0	6.6	6.9
Asphalt road	6.4	6.1	6.3	5.7	5.2	4.6
Ballast	4.2	3.8	3.9	5.9	5.1	5.3
Concrete	6.9	5.8	5.7	6.1	5.0	5.0
Play ground	6.5	5.7	6.2	8.5	8.2	7.4
Rubber plate	12.5	8.6	8.9	10.4	7.7	7.4
Tile floor	8.1	6.6	5.9	4.1	4.0	3.7
Wooden floor	7.5	5.8	9.4	5.8	3.2	3.7

< Specimen >

Film + EVA foam composite

* EVA foam = 9mm thick

< Method >

Loading 1 kg weight on the EVA side.

Sliding it on each places and measure the friction force with "Push-Pull machine".

Higher value means higher grip performance.

* Grip performance is directly correlated to rubber design and pattern.